

Compatible with leading surgical planning systems.



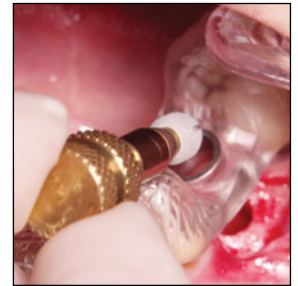
Surgical Guide must be stable. Use of tissue punch for flapless surgery is optional.



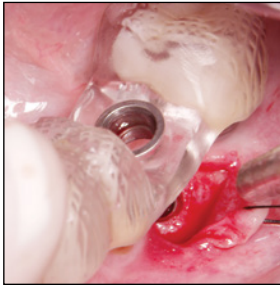
Spade drill rotating at 400 RPM with external irrigation.



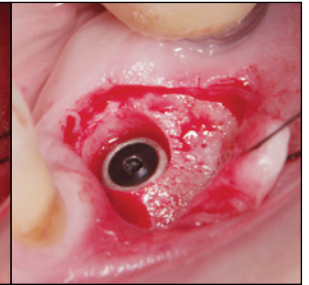
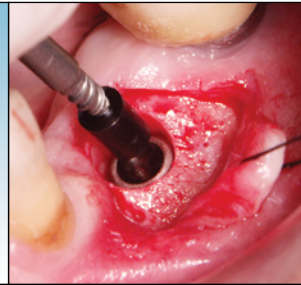
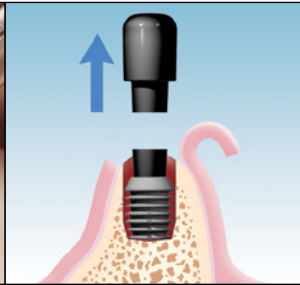
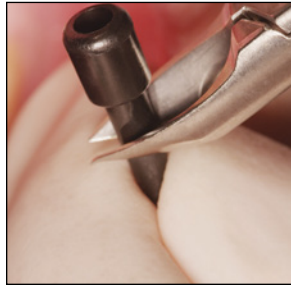
Use sequentially longer guided reamers rotating at 50 RPM without irrigation which will harvest autogenous bone. The length of the final reamer must correspond with the length of the desired implant.



Use of guided inserter is optional for seating implants.



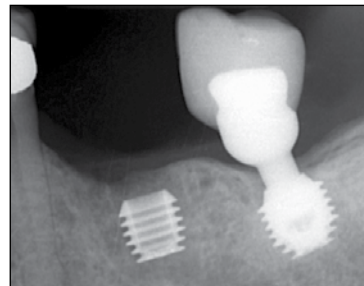
Before inserting healing plug, remove surgical guide.



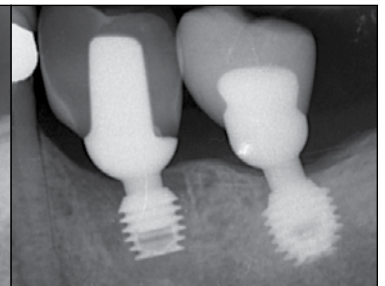
A variety of techniques and instruments may be used for cutting and inserting healing plugs.



Place autogenous bone graft over the implant before closing site.



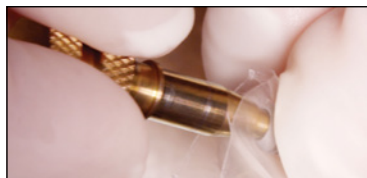
Post-operative 5.0 x 5.0mm implant.



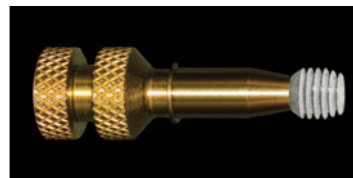
Post-operative Integrated Abutment Crown.



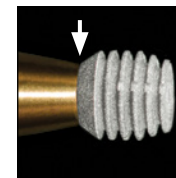
Use of Guided Inserter »



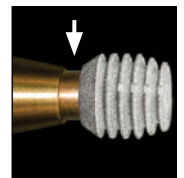
Turn knob until inserter body is flush with top of implant shoulder.



Proper position of implant on guided inserter.



Correct.



Incorrect.